

Kālā

A Currency for Data Integrity

Disclaimer: The information in this document is subject to change or update without notice and should not be construed as a commitment by Symatri.

This document and parts thereof must not be reproduced or copied without Symatri's written permission, and contents thereof must not be imparted to a third party nor be used for any unauthorized purpose.

Abstract

Kala is a cryptocurrency built on the same “Secure Hash Algorithm” as Bitcoin. This algorithm or protocol is referred to as SHA256.

The purpose of the Kala blockchain and its accompanying coin is to provide a transactional framework that is transparent, accessible, reliable, and not reliant on trust for integrity. Symatri has developed a feature set based on blockchain technology that can tackle the pressing data needs of various industries and be integrated easily into a vast array of integrity dependent data or record keeping functions. Kala Coin is used to put a stamp of approval and validation on each and every digitally notarized record which gives the coin immense staying power and value. Kala’s framework includes Kala Blockchain, Kala Coin, Kala Wallet, Kala Mining, Digital Notarization or NFT’s, Nodes, and a Rewards Program.

Contents

Abstract	2
1. Introduction	5
2. About Symatri	6
Building a Digital Economy Inside Symatri	6
A New Digital Currency	7
Multifaceted Approach	7
3. Kala Fundamentals	8
Kala's Blockchain	8
Kala Wallet	9
Kala Coin Listings	9
Mining	9
Additional Applications	9
Kala User Network	9
Why Kala Is Different	9
4. The Kala Coin	11
Purpose and Characterization	11
Implementation	11
Distribution	11
5. Why Use SHA 256 (Bitcoin Fork)	12
More Favorable Structure For Decentralization & Distribution through Proof of Work	12
Put the Kala Community in the Driver's Seat	12
Simplified Kala's Blockchain Design	12
6. Building the Kala Network	13
Hash Power Threshold	13
Future Network Opportunities	13
Kala Mining	13
7. Execution Plan	14
Milestones	14
8. Conclusion	16
9. References	17

1. Introduction



The power of blockchain and cryptocurrencies has been thrust into the spotlight with recent engagement from industry leaders all over the globe. Tech and information systems companies are beginning to embrace the idea of decentralization and transparent data. We have all realized the need for accessible and verifiable information.

**“Blockchain will do for transactions
what the internet did for information.”**

– Ginni Rometty, CEO IBM

In comparing blockchain to the internet, it's instructive to look back at the internet's early days, when most did not understand the impact it would have. In 1995, Newsweek author Clifford Stolls famously made this statement: “The truth is no online database will replace your daily newspaper, no CD-ROM can take the place of a competent teacher, and no computer network will change the way government works.”

Fast forward to today, and all agree that the internet has completely revolutionized industry, government, social interaction, and everything touched by the exchanging of information. Symatri believes that blockchain will be the next revolution to affect all aspects of life, similar to the internet. Our goal is to provide a platform that gives confidence and virtue to the interactive data needs of all participants in a transaction.

This white paper will explain how the Symatri framework, including the integration of the Kala cryptocurrency, offers a comprehensive foundation for numerous industry applications.

2. About SYMATRI

The concept of symmetry has timeless appeal, and is important in mathematics, science, nature, architecture, music, the arts, and literature. Symmetry refers to a sense of balance, proportion, and integrity.

Sym- means together or with


When hope becomes belief and the path becomes certain, confidence increases. By creating a transactional system that people everywhere can believe in, you remove heavy reliance on trust. Trust remains the greatest issue facing all transactions.

With transparency and security being innate to a decentralized blockchain, integration and use by an infinite number of businesses becomes inevitable. The power of information and its impact is distributed appropriately to all parties in the execution of an agreement. Nothing can be hidden or later manipulated from either side.

Symatri has positioned itself at the forefront of a monumental shift in how people, businesses, industries, and governments interact with one another. Kala's role in this shift has always been to be the vehicle or application of this shift.

The Framework of transactional integrity.

To unleash the power of blockchain Symatri understood that there would be a number of required elements.

- 
- There must be a convenient way to create, enter, or upload a contract, NFT, or existing record of a transaction into the Digital Notarization queue.
 - There must be an efficient way to hash transactions to the blockchain using a cryptocurrency and confirm to the user that the hashing process has taken place.
 - The cryptocurrency necessary to digitally notarize or hash transactions must be held in a secure but conveniently accessible digital wallet.
 - There must be an easy-to-use interface and way to search for transactions if they need to be used for proof, validation, or transaction completion.
 - Transactions and pertinent information must be displayed in a clear manner that the user can quickly analyze and validate.

Symatri has spent years building a framework that makes for a straightforward integration into existing data systems.

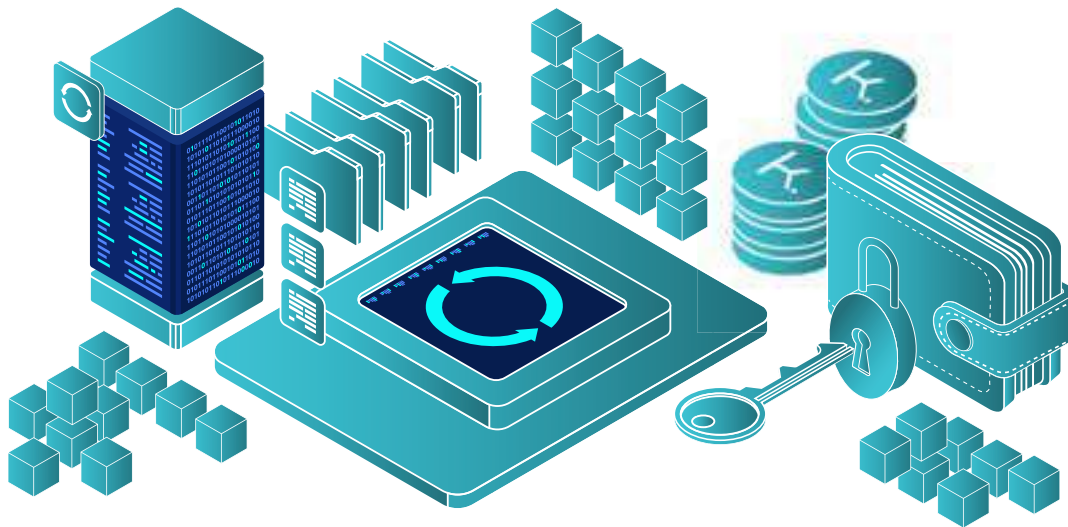
A New Digital Currency

In 2017-2018 Symatri built the Kala Blockchain and consequently Kala Coin came into existence. Kala Coin became the transactional vehicle for all records hashed to the accompanied blockchain.

Multifaceted Approach

Symatri has stayed true to their original mission of creating an irrefutable record of dealings between people, companies, institutions, or any combination of the aforementioned. The objective has always been to create a system where attribution, validation, proof, or data records could be stored unmolested and easily represented. Contracts, deeds, content creation, purchases, certificates, and thousands of other records are a part of most people's daily lives. By creating a proper and unminipulatable representation of these transactions and interactions, we believe that all parties are appropriately empowered. It also means that Kala Blockchain can be used for almost any industry that requires transactional records.

3. Kala Fundamentals



The path to a successful blockchain user experience is marked and structured by Kala's fundamental elements. Sound foundational principles and straightforward adaptability are what will give the Kala Blockchain lasting value and broad integration.

Kala's Blockchain

- The Kala Blockchain was created in 2017. On July 2nd, 2018 at 10:35:06 am the Kala blockchain became fully functional.
- Purposely built for Digital Notarization or hashing records of assets or transactions.
- Fully featured blockchain explorer. (<https://kalatools.pools.zone/blocks>)
- Built on the proven and very stable SHA256 (Hashing Algorithm)
- Fully featured Kala Wallet to support the cryptocurrency needs of the blockchain.
- Flexible integration for a spectrum of industries and businesses.

Digital Notarization

The Kala blockchain will be a powerfully diverse platform used for various applications. Current, paper-heavy systems are often complex, expensive, time-consuming, disconnected, and require third-party intermediaries. Kala is pioneering the use of blockchain technology to securely and efficiently advance various applications. Here are a few examples:

- Asset authentication, verification, or NFT's.
- Digitally Notarized or "hashed" records.
- Transaction record access and transparency.
- Proof of content ownership
- Data connectivity
- Polling integrity
- Livestock Management Records
- Payment in and out solutions
- Medical Records
- Donation reception, reporting, and transparency
- Rewards programs
- Education and certification records

While many current blockchain projects are conceptual and tout theories based on future application, the Kala Blockchain has been functioning for years. Kala was not built on the backs of existing projects or using a third party structure. This blockchain was engineered as a stand-alone platform.

Kala Wallet

Most cryptocurrencies depend on the use of a third party wallet. Symatri decided early on that it was critical to build their own wallet. This was done for a number of reasons. Foremost, Symatri wanted control over wallet security. Second, we wanted to control and implement our desired functionality and feature set. By building our own wallet we have been able to implement the following:

- Kala Wallet can currently hold multiple crypto currencies.
- By choosing to upgrade, you can exit the omnibus wallet and receive your own private keys.
- If you misplace your private keys, we offer a secure system to recover them.
- You can insure BTC held within your hot wallet.
- Your BTC insurance policy is hashed to the blockchain.
- BTC can be received, held, sent, and purchased within the wallet.
- Future: Available attached debit card with exchange capabilities.

Kala Coin Listing

Kala is currently listed and trading on multiple cryptocurrency exchanges like WhiteBit and ProBit. Coins can be exchanged or purchased there.

Mining

Kala Coin mining began in July 2018 through pre-configured mining rigs. In Dec. 2018 we introduced fractional mining (GH contracts) with low entry costs to expand the mining opportunity even more. Thousands of users are actively mining through rigs or mining contracts. The Kala network already has a hash power that far exceeds many coins on the market.

Kala User Network

There are tens of thousands of users participating in the Kala network. As the network continues to grow, it becomes a valuable offering in itself that can be used to foster business partnerships across a variety of markets.

Why Is Kala Different?



1. Value - Kala Coin is necessary in all transactional functions on the Kala Blockchain. This gives Kala Coin inherent demand and value. The coin is used to hash any transactions and because it has value is also used as a medium of exchange.

2. Verification – Kala turns the blockchain into a “Proof of Ownership” or “Asset Verification” tool that efficiently and effectively takes care of age-old issues pertaining to disputes over digital or real property. As the world has embraced the power of the internet and technology, proof of ownership through digital notarization or NFT’s have taken center stage.

3. Existing Ecosystem – Many blockchain projects are still in early development phases. People don’t have to wait for a platform to be built in order to participate in the Kala Framework. As Symatri expands its ecosystem, the economic possibilities for users are heightened. These possibilities are available in all business scenarios like business to business, business to customer, and so on.

As befits the decentralized inspiration behind blockchain technology, the Kala ecosystem will be widely accessible. It’s estimated there are approximately 2 billion individuals with access to the Internet or mobile phones who don’t have access to a traditional exchange or banking system.² Symatri offers a unique opportunity for these individuals to participate in the Symatri Ecosystem.

4. The Kala Coin



Purpose and Characterization

In 2018, Symatri introduced a general-purpose cryptocurrency named Kala that is the unit for economic transactions within the Symatri Ecosystem. Like other cryptocurrencies, units of Kala are fungible and transferable.

Kala Coin Specifics



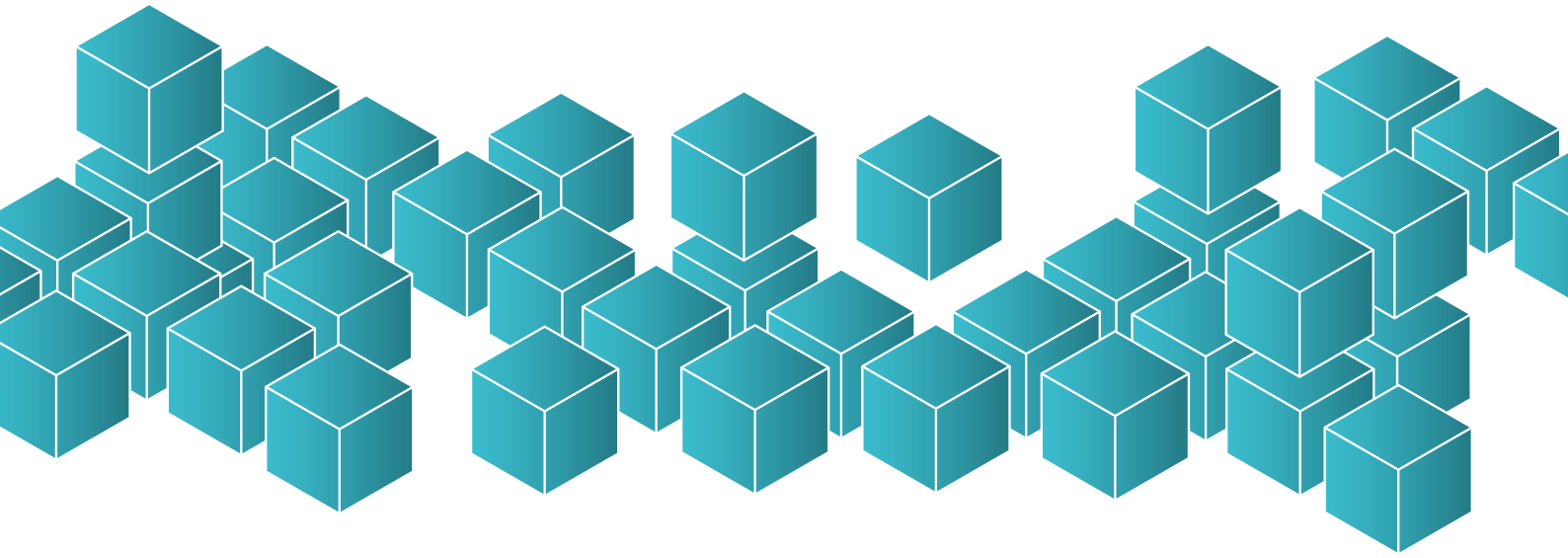
Implementation

Kala is a cryptocurrency (KALA) created as a variant of the Bitcoin open-source protocol. Each coin issued equals one coin generated on the blockchain.

Distribution

Kala was created according to a controlled supply strategy, similar to Bitcoin. This means that Kala will have a finite number of lifetime coins that are issued on a set schedule.

5. Why use SHA 256



Favorable Structure for Decentralization & Distribution through Proof of Work

Bitcoin, whose primary purpose is to function without the requirement of trust through decentralization, is built on a Proof of Work mining method. Coin rewards are earned (mined) by those who solve complicated mathematical algorithms to verify transactions. This design gives every person the opportunity to mine Bitcoin.

Kala believes in the power of decentralization and the transparency it affords.

Simplified Kala's Blockchain Design

Since Bitcoin has been around for almost 12 years, there are hundreds of supporting tools already developed and in use. Moving to the same hashing algorithm as Bitcoin increases the ease of adoption across multiple platforms, such as wallets and exchanges. This makes Kala easier to use, with wider access in comparison to other lesser known crypto offerings.

Moving to a blockchain built on the Bitcoin algorithm not only has the above benefits, but also gave us the opportunity to give the highest mining rewards at the beginning of Kala mining to our supporters and partners.

6. Building the Kala Network

Hash Power Threshold

When launching Kala, our greatest concern was for the integrity of the blockchain. Kala developers do not want anyone to “take control” by using their tremendous power and resources to outperform all of the other miners, essentially grabbing up all of the coins. This has happened numerous times and unfortunately undermines the desired “decentralizing” attributes most blockchain users and creators strive for. Knowing this would be a problem, we have protected the blockchain by keeping it mostly private and limiting mining power until the Kala Blockchain has strength to stand on its own. As time goes on and there is less of a threat of it being nefariously commandeered, we will add many additional nodes and move toward our original goal of being a fully decentralized blockchain. This benefits our users, especially protecting early adopters who are currently mining the coin.

The network will be built in phases, allowing different groups to participate in a tiered private rollout that will end with the public. The blockchain and mining will be kept exclusively in the Kala community and Symatri partners until reaching a certain network hash power threshold.

Since the cryptocurrency arena does change rapidly, the advisory team will continue to monitor and strategize during the network building phases, and may choose to adjust the threshold. Those who participate early will still enjoy the biggest rewards, regardless of the final hash power threshold.

Future Network Opportunities

Blockchain technology is quickly becoming a revolutionary force within today’s business world, and this is just the beginning. Industries like financial institutions, retail stores, health care, humanitarian initiatives, real estate, and more are already looking at implementing blockchain solutions. All of those business applications need to be built on a network, and many companies would prefer to use an existing framework instead of creating their own. It is essentially a race to build the infrastructure (the networks) for all these future applications. This opens incredible opportunities for us to partner with others to build their technologies on our network—and for our users to benefit.

Kala Mining

Kala is mined much like bitcoin or other cryptocurrencies. In the beginning, pre-configured Kala rigs or mining machines were available for purchase. Kala rigs or fractional mining purchases will be the only way to mine Kala until the blockchain goes public.

- Kala rigs are built on the SHA-256 algorithm.
- Each of the initial rig configurations produces 4 TH/s. This limit allows for even further decentralization and distribution width.

7. Execution Plan

Milestones

-  **Nov. 2017 – Launched Kala ICO**
Group 1 sold out in four hours
-  **Mar. 2018 - Switched from ERC20 token to SHA256**
Increased stability, integration, & legitimacy
-  **July 2018 - Kala Blockchain Goes Live**
Unique blockchain set Kala apart
-  **July 2018 - Launched 1st Stage of Kala Mining**
Sale of pre-configured Kala Rigs
-  **Beginning July 2018 – Build Kala’s Network**
Kala’s network continues to grow, stabilize, and become more distributed
-  **July 2018 - Free Kala Wallet Released**
Simple, safe, and secure platform to store & use Kala or BTC.
-  **Dec. 2018 - Introduced Fractional Mining (GH)**
Made Kala mining available
-  **Jan. 2019 - Launched Kala Listings**
P2P trading of Kala & BTC
-  **Feb. 2019 - Integrated First Outside Platforms into the Kala Ecosystem**
The beginning of expanding the Kala Ecosystem through partnerships
-  **Mar. 2019 - Released Bulk Listings Upgrade**
Allowed users to trade bulk amounts of Kala
-  **April 2019 - Launched Kala Deals**
Kala Users could purchase exclusive discounts with Kala
-  **May 2020- On a Public Exchange**
Listed and exchanging on Probit
-  **November 2020- On a Public Exchange**
Listed and exchanging on WhiteBit



November 2020- Crypto Payment Solution
Payment Solution integrated with partners



November 2020- Deployed “Digital Notarization” or NFT’s
Records being hashed to the blockchain.



November 2020- Hot Wallet Insurance
BTC can now be insured in the Kala Pro Wallet.



April 2021- BTM Program
Bitcoin “ATM’s” or BTM’s are deployed with Kala Wallet as the preferred wallet.



June 2021- Crypto Donations Platform
Charitable donations can be received, reported, and held.



Future- In Wallet Exchange and Purchasing
Exchanging from crypto to FIAT and debit card purchases can be made straight from the Kala Wallet.



Future- Rewards Program
Blockchain based universal rewards program



Future - Node Strategy
Further distribute the network to add stability and integrity to the blockchain

NOTE: At the date this document is published, Symatri intends to follow through as described in this white paper. However, changes in business strategy, the regulatory environment, technologies, and other unforeseen circumstances may necessitate deviations from the described plan. Symatri intends to faithfully follow through on execution of the plan outlined, but retains the right to deviate as needed to be successful.



8. Conclusion

The Symatri Ecosystem is perfectly structured to foster a flourishing economy built around Kala. Blockchain development is quickly becoming one of the most important philosophical changes in the history of humans and their interaction with currency, especially in relation to our current data and financial systems. Kala will confidently help usher in a new wave of technology that benefits people and businesses around the globe.

9. References

1. <https://www.edelman.com/trust2017/>
2. <http://www.worldbank.org/en/news/video/2016/03/10/2-billion-number-of-adults-world-wide-without-access-to-formal-financial-services>
3. <https://www.forbes.com/sites/mayakachroolevine/2016/09/28/heres-how-much-youre-going-to-spend-on-the-holidays-this-year/#4288a4e94628>